



COMMERCIAL REFRIGERATION EQUIPMENT FOR THE PROFESSIONAL

www.fosterrefrigeration.com
Toll free: 1.833.367.8373

Model #:
FBB-24-72-HC

Backbar Series:
Triple Swing Solid Door Back Bar Cooler - Hydrocarbon Refrigerant



FBB-24-72-HC

- **Cabinet Construction**
Painted steel exterior and stainless steel interior including floor.
- **Rounded corner** design inside of cabinet for easy cleaning.
- **Standard door features:**
Heavy duty pull handle. Each door features two spring loaded hinges with automatic closing.
90° Hold-open feature for easy loading and unloading.
- **Refrigeration system** holds 33°F to 41°F (0.5°C to 5°C).
- **CAREL Electronic Control System**
Fully adjustable temperature set points and defrost frequency. Self monitors to diagnose service status. Carel is a world leader in refrigeration controls.
- **Shelf:** Adjustable, heavy duty PVC coated shelves.
- **Lock & key:** protect contents.
Easily accessible condenser coil for cleaning.
- **L.E.D. Lighting** inside cabinet.



Rough-In Data

Specifications subject to change without notice.

| Model | Doors | Cabinet Dimensions (inches) (mm) | | | Shelves | Capacity | | HP | Voltage | Amps | NEMA Config. | Crated Weight (pounds) (kg) |
|--------------|-------|--|---------------|---------------|---------|----------------|----------------|-----|----------|------|-----------------|--------------------------------------|
| | | L | D | H | | 12 oz. Cans | 1/2 Barrels | | | | | |
| FBB-24-72-HC | 3 | 72 3/4 1848 | 24 1/2 622 | 36 1/4 921 | 6 | 84 6 packs | 3 | 1/4 | 115/60/1 | 4 | 5-15P Ⓜ | 374 170 |



STANDARD FEATURES

Hydrocarbon Refrigeration System

- Foster's innovative and environmentally friendly design incorporates R-290 hydrocarbon refrigerant. Hydrocarbon refrigerants are naturally occurring and have zero ozone depletion potential (ODP-0) and a global warming potential of three (GWP-3).
- Factory balanced, self contained refrigeration system maintains temperatures of 33°F to 40°F (0.5°C to 5°C).

Digital temperature control and monitoring system

- Digital temperature control and monitoring is powered by Carel. Carel is a world leader in refrigeration system controls.
- Automatic evaporator fan motor delays.
- Digital display for real time monitoring.
- Auto-defrost function.

Doors

- Painted steel exterior with stainless steel liner.
- Positive self closing/sealing with removable gasket for cleaning or replacement.
- Stay open feature allows door to remain open at 100° for easy loading or unloading.

Cabinet Construction

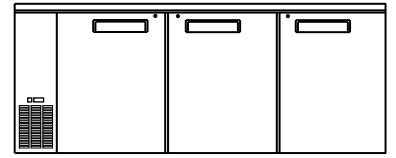
- Foster Bar Coolers feature durable painted steel exterior body. The interior cabinet is full stainless steel construction with radius cornered floor pan for easy cleaning.
- Foamed in place CFC and HCFC free polyurethane insulation enhances the structural strength of the cabinet and increases energy efficiency.
- Cabinet insulation - cabinet is constructed with a foamed in place process using a high density, polyurethane insulation. This insulation has zero ozone depletion potential (ODP) and zero global warming potential (GWP).

Shelving

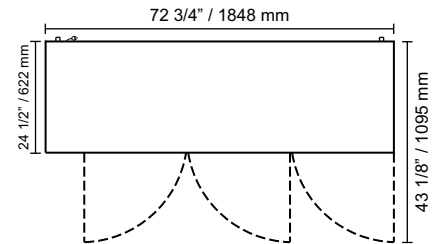
- Six adjustable PVC coated shelves are included.



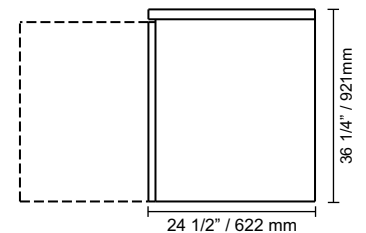
PLAN VIEW



FRONT VIEW



PLAN VIEW



SIDE VIEW